

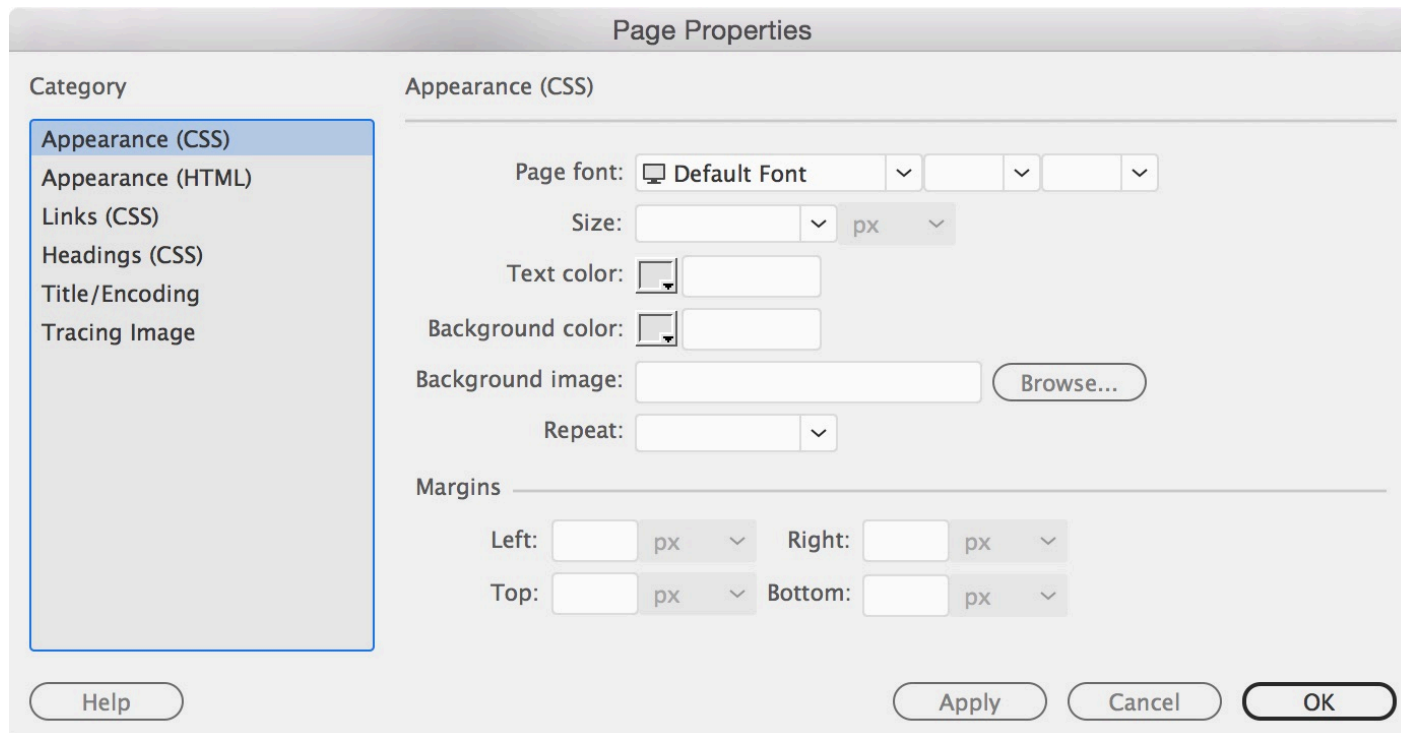
ExplorNet's Digital Media II

Objective 207.03 8%

Execute advanced production methods to design and develop websites.

Set Page Properties

- ❑ You can specify layout and formatting properties for each page using the Page Properties dialog box.



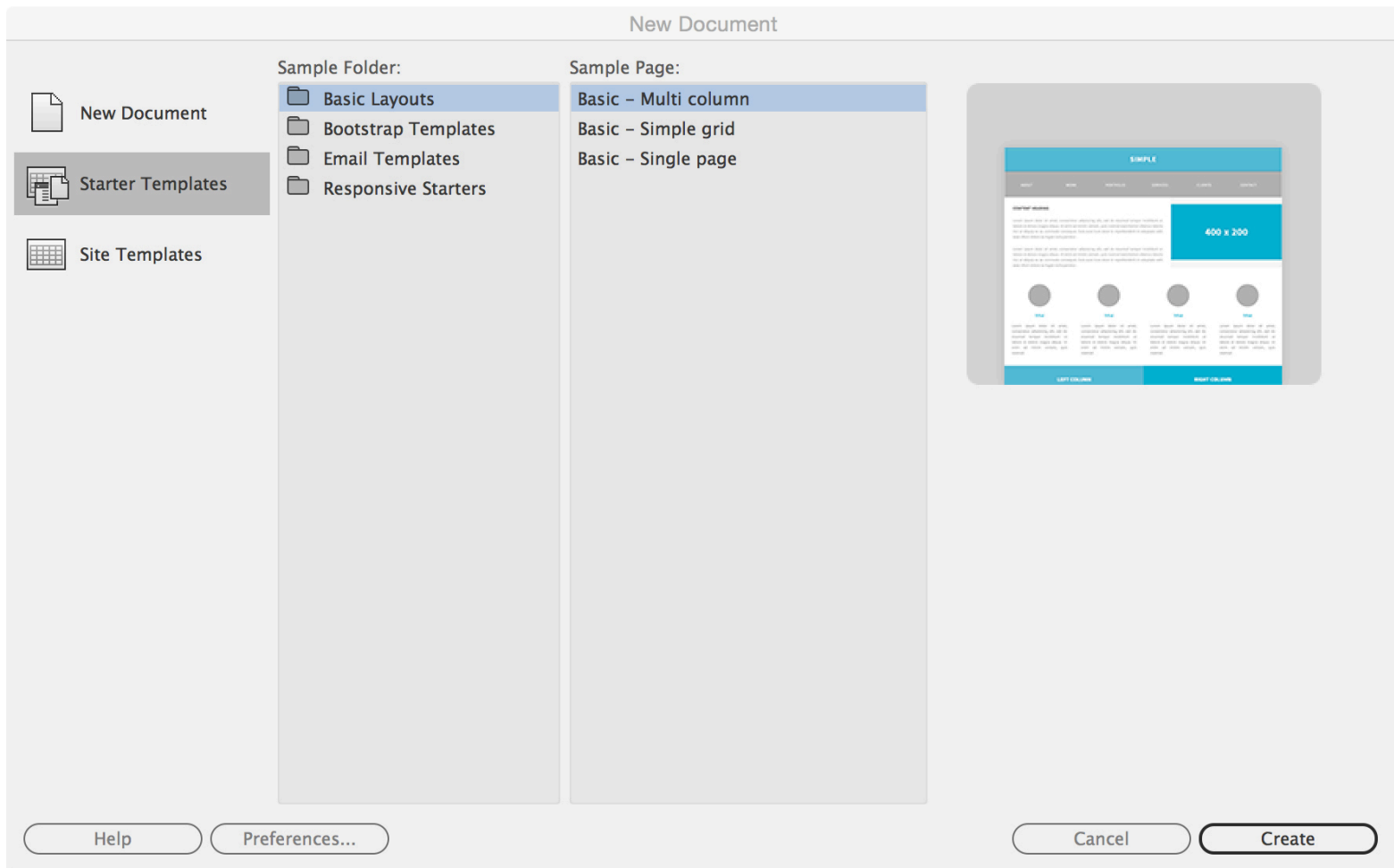
Add Meta Tags

- The meta tags contain elements that describe the information on the page, which is used by search browsers.
- You can set the properties of **head** elements to control how your pages are identified including:
 - Page title
 - Specify keywords
 - Page description
- Use Insert>HTML>Keywords or Description to enter tags.

Using Templates

- A template is a special type of document that you use to design a “fixed” page layout; you can then use the web page to create a template that inherits its page layout.
- Templates allow a Web designer to construct a site that
 - Is flexible
 - Easy to update, and
 - Consistent between HTML pages.

Using Templates



Using Templates

- Designers can make changes to the overall design of the site quickly by revising the .DWT files directly.
- The pages that are linked to the template files are automatically updated allowing for site-wide modifications in minutes.
- Make sure not to move the .DWT file from the Templates folder. Do not rename or move the Templates folder. As long as the .DWT file remains inside the Templates folder, the links from the HTML pages to the template will not be broken.

Editable Regions

- As you design a template, you specify as “editable” which content users can edit in a document based on that template.
- Selected content may be set as editable regions or an editable region may be inserted into the template.
- Editable regions enable template authors to control which page elements template users—such as writers, graphic artists, or other web developers—can edit.

Editable Regions

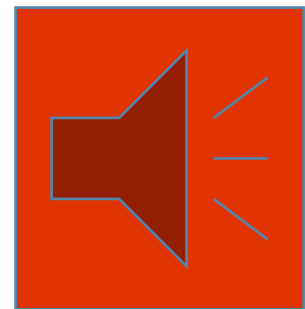
- You can create a template from an existing document or from a new document.
- As you work in the **template**, you can make changes to both editable and locked regions.
- In a **document** based on the template, however, a template user can make changes only in the editable regions; the locked regions can't be modified.
- This keeps the overall template design consistent across multiple pages.

Layout Design with Tables

- Tables are a powerful tool for presenting tabular data and for laying out text and graphics on an HTML page.
- Using a table with specific size properties can ensure the page layout shows as designed.
- Cells, columns, and rows can be merged, split, resized, etc. the same as in other programs.
- Properties such as color, alignment, etc. can be applied to the table cells.

Using Media

- Media will not be visible in Design view, the file must be previewed in a browser to test media.
- Animated GIF's
 - Use the same process as inserting an image.
- Audio
 - Insert audio files using Insert/HTML.
 - Apply properties such as controls, autoplay or loop playback.



Using Media

- Video
 - Video formats include .SWF, .FLV, .AVI, .MOV or .MPEG.
 - May need plugin files for playback.
 - Insert movie files using Insert/HTML.
 - Apply properties such as skin, controls, autoplay or loop playback.
- All media files must be in root folder for proper playback.
- Or use youtube/vimeo to store video and link to page.